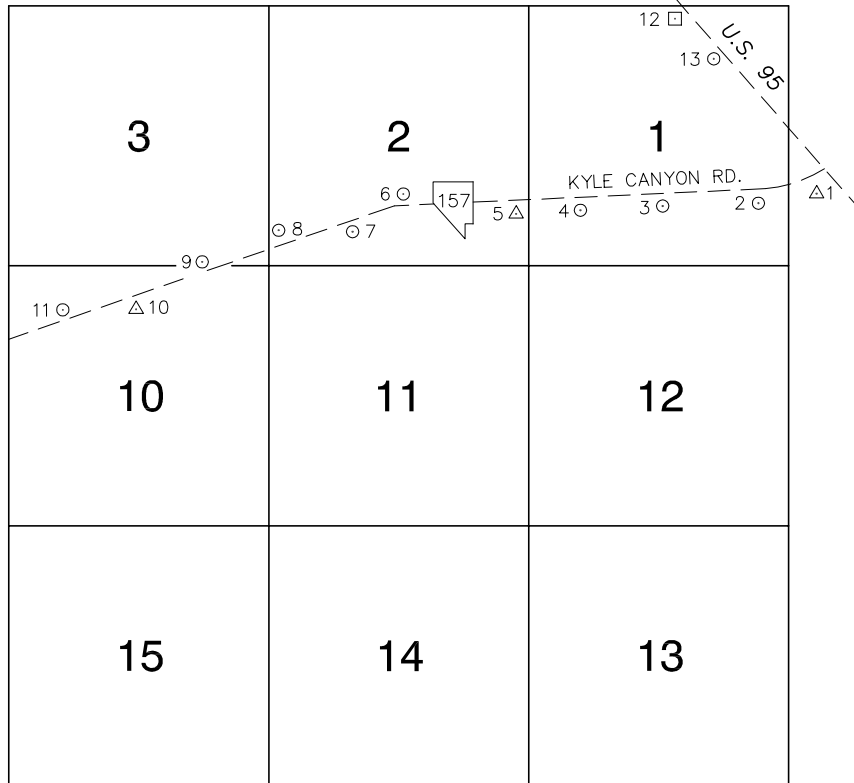


FOR REFERENCE ONLY

*2018 BENCHMARK NETWORK ADJUSTMENT SUPERSEDES THE 2003 BENCHMARK BOOK

**Township 19 South, Range 59 East
Northeast Quarter**



NORTH AMERICAN VERTICAL
DATUM OF 1988
- ALL ELEVATIONS IN METERS -

No.	STATION	ELEVATION (METERS)	DESCRIPTION
1	2C90 6W6	858.813 *	F N D USDA BRASS CAP ON AN IRON PIPE, 140' SW OF TELEPHONE POLE #26994T, SW CORNER OF THE U.S. 95/KYLE CANYON TURNOFF.
2	NDOT 318+28	867.008	F N D NDOT BRASS CAP IN CONCRETE, AT KYLE CANYON RD. AND HIGHWAY 95/ FRONTAGE RD. 1100' WEST OF HIGHWAY 95, STAMPED "318+28.31 DIST 40.63 ANGLE 90"
3	0C99 1S6 2000	892.544 *	S E T RIVET AND ROUND ALUMINUM PLATE IN A CONCRETE MONUMENT, SW CORNER OF KYLE CANYON RD. AND BARNEY ST. 0.7 MILES WEST OF HIGHWAY 95.
4	0C99 1SW6 2000	905.781	S E T RIVET AND ROUND ALUMINUM PLATE IN A CONCRETE HEADWALL, SOUTH SIDE OF KYLE CANYON RD. AND 250' EAST OF RIMROCK ST. 0.96 MILES WEST OF HIGHWAY 95.
5	2 GWM 1951	922.227	F N D 4" USGS BRASS CAP IN A CONCRETE HEADWALL, SOUTH SIDE OF KYLE CANYON RD. 1.26 MILES WEST OF HIGHWAY 95.
6	0C99 2SE6 2000	942.456	S E T RIVET AND ROUND ALUMINUM PLATE IN A CONCRETE HEADWALL, NORTH SIDE OF KYLE CANYON RD. 260' EAST OF RUFUS RD. 1.62 MILES WEST OF HIGHWAY 95, NEAR THE PC OF KYLE CANYON RD.
7	0C99 2SW6 2000	956.091	S E T RIVET AND ROUND ALUMINUM PLATE IN A CONCRETE HEADWALL, SOUTH SIDE OF KYLE CANYON RD. 600' WEST OF RUFUS RD. 1.9 MILES WEST OF HIGHWAY 95.
8	0C99 2SWW6 2000	977.639	S E T RIVET AND ROUND ALUMINUM PLATE IN A CONCRETE MAILBOX BASE, NE CORNER OF KYLE CANYON RD. AND WITCH MOUNTAIN ST. 2.25 MILES WEST OF HIGHWAY 95.
9	0C99 10NNE6 2000	992.319	S E T RIVET AND ROUND ALUMINUM PLATE IN A CONCRETE TRANSFORMER PAD., EAST SIDE OF NICHOLSON ST., 175' NORTH OF KYLE CANYON RD. 2.53 MILES WEST OF HIGHWAY 95.
10	3 GWM 1951	1019.492	F N D 4" USGS BRASS CAP IN A CONCRETE HEADWALL, SOUTH SIDE OF KYLE CANYON RD. 500' EAST OF LUCKY STAR RD. 2.98 MILES WEST OF HIGHWAY 95.
11	0C99 10NW6 2000	1026.906	S E T RIVET AND ROUND ALUMINUM PLATE IN A CONCRETE ELECTRICAL VAULT, NW CORNER OF LUCKY STAR RD. AND KYLE CANYON RD. 3.1 MILES WEST OF HIGHWAY 95.

CLARK COUNTY VERTICAL CONTROL v.2003

CLARK COUNTY SURVEYOR'S OFFICE
5051 SOUTH PARADISE ROAD
LAS VEGAS, NEVADA 89119
(702) 455-0640

CONVERSION FACTOR:
METERS X $\left(\frac{3937}{1200}\right)$ = U.S. SURVEY FEET

REVISED 2003

SHEET
1 OF 2

**19-59
NE**

FOR REFERENCE ONLY

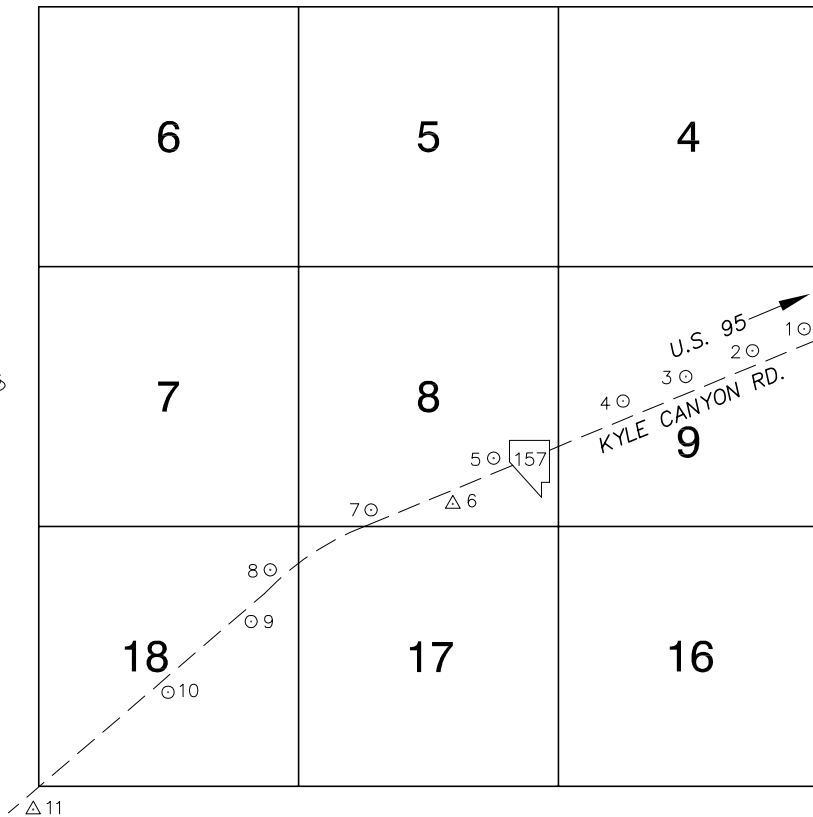
***2018 BENCHMARK NETWORK ADJUSTMENT SUPERSEDES THE 2003 BENCHMARK BOOK**

No.	STATION	ELEVATION (METERS)	DESCRIPTION	No.	STATION	ELEVATION (METERS)	DESCRIPTION
12	2C99 1NNE6	870.656	SE T RIVET AND SQUARE ALUMINUM PLATE IN TOP OF HEADWALL, SOUTHWEST SIDE OF U.S. 95. APPROX. 100' NORTH OF MILE MARKER 93.	25			
13	7C99 1NEE6 1997	867.345	SE T RIVET AND ROUND ALUMINUM PLATE IN TOP OF HEADWALL, SOUTHWEST SIDE OF U.S. 95. APPROX. 0.5 MILE NORTH OF MILE MARKER 92.	26			
14				27			
15				28			
16				29			
17				30			
18				31			
19				32			
20				33			
21				34			
22				35			
23				CLARK COUNTY VERTICAL CONTROL v.2003			
24				CLARK COUNTY SURVEYOR'S OFFICE 5051 SOUTH PARADISE ROAD LAS VEGAS, NEVADA 89119 (702) 455-0640		CONVERSION FACTOR: METERS X $\left(\frac{3937}{1200}\right)$ = U.S. SURVEY FEET	
				REVISED 2003	SHEET 2 OF 2	19-59 NE	

FOR REFERENCE ONLY

*2018 BENCHMARK NETWORK ADJUSTMENT SUPERSEDES THE 2003 BENCHMARK BOOK

Township 19 South, Range 59 East
Northwest Quarter



NORTH AMERICAN VERTICAL
DATUM OF 1988
- ALL ELEVATIONS IN METERS -

No.	STATION	ELEVATION (METERS)	DESCRIPTION
1	OC99 9NEE6 2000	1044.733	SE T RIVET AND ROUND ALUMINUM PLATE IN A CONCRETE ELECTRICAL VAULT, NORTH SIDE OF KYLE CANYON RD. 400' EAST OF RAFI WAY 3.45 MILES WEST OF HIGHWAY 95.
2	OC99 9NE6 2000	1056.116	SE T RIVET AND ROUND ALUMINUM PLATE IN A CONCRETE ELECTRICAL VAULT, NORTH SIDE OF KYLE CANYON RD. 140' WEST OF RAFI DR. 3.45 MILES WEST OF HIGHWAY 95.
3	OC99 9C4 2000	1080.241	SE T RIVET AND ROUND ALUMINUM PLATE IN A CONCRETE ELECTRICAL VAULT, NORTH SIDE OF KYLE CANYON RD. 3.99 MILES WEST OF HIGHWAY 95.
4	OC99 9W6 2000	1100.504	SE T RIVET AND ROUND ALUMINUM PLATE IN A CONCRETE ELECTRICAL VAULT, NORTH SIDE OF KYLE CANYON RD. 200' EAST OF CARDENAS ST. 4.32 MILES WEST OF HIGHWAY 95.
5	OC99 8SE6 2000	1120.241	SE T RIVET AND ROUND ALUMINUM PLATE IN A CONCRETE ELECTRICAL VAULT, NORTHWEST CORNER OF KYLE CANYON RD. AND WOOLBRIGHT WAY. 4.63 MILES WEST OF HIGHWAY 95.
6	4 GWM 1951	1138.666	F N D 4" USGS BRASS CAP IN A CONCRETE HEADWALL, SOUTH SIDE OF KYLE CANYON RD. 400' EAST OF REYMORE ST. 4.95 MILES WEST OF HIGHWAY 95.
7	OC99 8SSW6 2000	1157.970	SE T RIVET AND ROUND ALUMINUM PLATE IN A CONCRETE ELECTRICAL TRANSFORMER PAD. NORTH SIDE OF KYLE CANYON RD. 600' EAST OF HURTADO ST. 4.26 MILES WEST OF HIGHWAY 95.
8	OC99 18NEE6 2000	1177.843	SE T RIVET AND ROUND ALUMINUM PLATE IN A CONCRETE ELECTRICAL VAULT, NORTH SIDE OF KYLE CANYON RD. 1200' WEST OF HURTADO ST. 5.62 MILES WEST OF HIGHWAY 95.
9	OC99 18NE6 2000	1193.382	SE T RIVET AND ROUND ALUMINUM PLATE IN A CONCRETE HEADWALL, SOUTH SIDE OF KYLE CANYON RD. 1400' EAST OF SCOTTIE ST. 5.87 MILES WEST OF HIGHWAY 95.
10	OC99 18C4 2000	1216.706	SE T RIVET AND ROUND ALUMINUM PLATE IN A CONCRETE HEADWALL, SOUTH SIDE OF KYLE CANYON RD. 400' WEST OF SCOTTIE ST. 6.23 MILES WEST OF HIGHWAY 95.
11	5 GWM 1951	1251.496	F N D 4" USGS BRASS CAP IN A CONCRETE HEADWALL, SOUTH SIDE OF KYLE CANYON RD. 3200' WEST OF SCOTTIE ST. 6.77 MILES WEST OF HIGHWAY 95.

CLARK COUNTY VERTICAL CONTROL v.2003

CLARK COUNTY SURVEYOR'S OFFICE
5051 SOUTH PARADISE ROAD
LAS VEGAS, NEVADA 89119
(702) 455-0640

CONVERSION FACTOR:
METERS X $\left(\frac{3937}{1200}\right)$ = U.S. SURVEY FEET

REVISED 2003

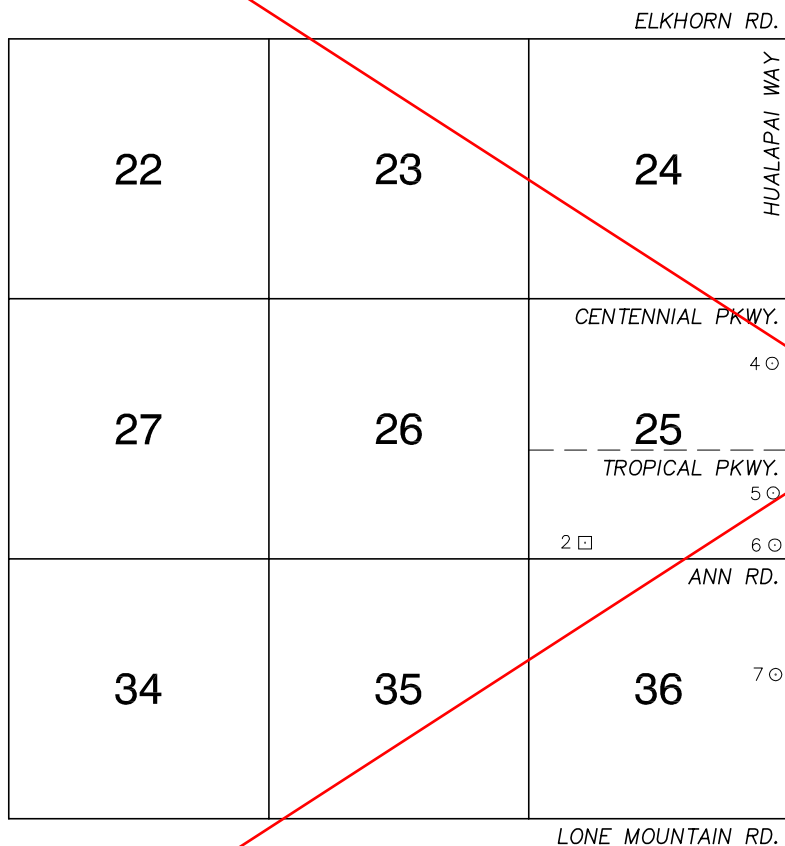
SHEET
1 OF 1

19-59
NW

FOR REFERENCE ONLY

*2018 BENCHMARK NETWORK ADJUSTMENT SUPERSEDES THE 2003 BENCHMARK BOOK

Township 19 South, Range 59 East
Southeast Quarter



No.	STATION	ELEVATION (METERS)	DESCRIPTION
1			LOST 2003
2	1C99 25SSW6	880.386	F RIVET AND SQUARE ALUMINUM PLATE IN NORTHEAST N CORNER OF A CONCRETE BASE FOR A LARGE POWER D POLE (#40-8) AT THE WEST END OF ANN RD.
3			LOST 2003
4	8LV99 25NEE6	838.300	F CITY OF LAS VEGAS RIVET AND ROUND PLATE IN A N CONCRETE CYLINDER AT THE NORTHWEST CORNER OF D HUALAPAI WAY AND AZURE AVE.
5	8LV99 25SEE6	831.941	F CITY OF LAS VEGAS RIVET AND ROUND PLATE IN A N CONCRETE CYLINDER AT THE SOUTHEAST CORNER OF D HUALAPAI WAY AND EL CAMPO GRANDE AVE.
6	8LV99 25SES	831.194	F CITY OF LAS VEGAS RIVET AND ROUND PLATE IN A N CONCRETE CYLINDER AT THE NORTHWEST CORNER OF D HUALAPAI WAY AND ANN RD.
7	8LV99 36E4	830.075	F CITY OF LAS VEGAS RIVET AND ROUND PLATE IN A N CONCRETE CYLINDER AT THE SOUTHWEST CORNER OF D HUALAPAI WAY AND WASHBURN RD.
8			
9			
10			
11			

NORTH AMERICAN VERTICAL
DATUM OF 1988
- ALL ELEVATIONS IN METERS -

CLARK COUNTY VERTICAL CONTROL v.2003

CLARK COUNTY SURVEYOR'S OFFICE
5051 SOUTH PARADISE ROAD
LAS VEGAS, NEVADA 89119
(702) 455-0640

CONVERSION FACTOR:
METERS X $\left(\frac{3937}{1200}\right)$ = U.S. SURVEY FEET

REVISED 2003

SHEET
1 of 1

19-59
SE